

DARLINGTON ROAD

SOUTHSEA | HAMPSHIRE | PO4 0NF



£385,000

Freehold

- Traditional Victorian Three Bedroom House
- Within Walking Distance of Shops and Amenities
- Open Plan Kitchen/ Diner with Integrated Appliances
- Beautifully Appointed Bathroom : Downstairs WC
- Character Features Throughout
- South Facing Rear Garden
- Gas Central Heating : Double Glazing Throughout
- Viewing Advised!



In Brief

This charming property in Darlington Road, offers 105m² of living space spread across two floors, whilst being within walking distance of shops and amenities. The home boasts three bedrooms, including a spacious primary bedroom, a well-appointed bathrooms and a separate downstairs WC.

The property's layout includes a spacious sitting room, providing ample space for relaxation and entertainment. A standout feature is the bay window in the dining area, which floods the room with natural light. The modern kitchen is equipped with contemporary appliances, including a washing machine, and features subway tile backsplash and wooden flooring. The living room showcases a fireplace, high ceilings, and vibrant decor, creating a welcoming atmosphere. The bathroom is tastefully designed, featuring a three piece bathroom suite. The bedrooms are well-proportioned, with the primary bedroom offering ample storage space.

Throughout the home, hardwood floors, white walls, and strategically placed windows create a bright and airy ambiance. This Southsea residence combines functionality with style, making it an ideal living space for those seeking comfort and convenience.

£385,000

KEY FACTS

TENURE: Freehold

EPC RATING: 'C'

COUNCIL TAX BAND: 'B'



DARLINGTON ROAD

SOUTHSEA | HAMPSHIRE | PO4 0NF

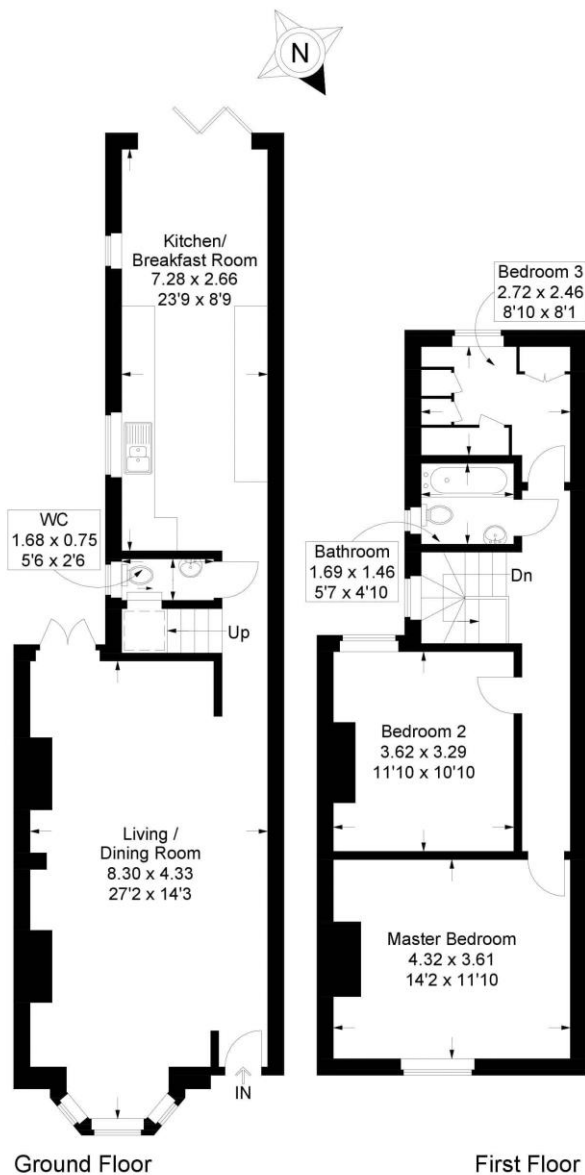


Darlington Road, Southsea

Approximate Gross Internal Area = 105.1 sq m / 1131 sq ft
(Excluding Reduced Headroom / Eaves)

Reduced Headroom = 0.5 sq m / 5 sq ft

Total = 105.6 sq m / 1136 sq ft



 = Reduced headroom below 1.5m / 5'0

This plan is for layout guidance only. Not drawn to scale unless stated. Windows and door openings are approximate. Whilst every care is taken in the preparation of this plan, please check all dimensions, shapes and compass bearings before making any decisions reliant upon them.

Southsea
Sales & Lettings
7/9 Stanley Street,
Southsea, PO5 2DS
Tel: 023 9281 5221

Old Portsmouth & Gunwharf Quays
Sales & Lettings
The Seagull, 13 Broad Street,
Old Portsmouth, PO1 2JD
Tel: 023 9281 5221

Drayton & Out of Town
Sales & Lettings
139 Havant Road,
Drayton, PO6 2AA
Tel: 023 9221 0101

London
Sales & Lettings
Mayfair Office, Cashel House,
15 Thayer Street, W1U 3JT
Tel: 0870 112 7099

Southsea
Admin Centre
12 Marmion Road,
Southsea, PO5 2BA
Tel: 023 9282 2300

www.fryandkent.com